

Disney Parks Blog

presents:

Disney Paper Parks

Happy Haunts

part 8

The Haunted Mansion Parlor

created by Stephanie Jazmines & Amy Young of



Walt Disney IMAGINEERING
© Disney

#DisneyMagicMoments

#DisneyPaperParks





Disney Paper Parks

#DisneyMagicMoments | #DisneyPaperParks

THE HAUNTED MANSION PARLOR

Sheet Numbers: 1, 2, 3, 4, 5, 6, 7

HISTORY

Since opening its front doors at Disneyland® Park in 1969, the Haunted Mansion and the lore surrounding it has captured the mortal hearts of Disney Parks guests, from inspiring subsequent attractions and multiple film adaptations to the soon-to-debut lounge onboard the Disney Treasure. Plans for the Haunted Mansion Parlor will honor more than five decades of fandom and introduce the world to the next chapter of the Haunted Mansion saga.

Disney Cruise Line and Disney Imagineers will harness the power of design to convey the nostalgia of the original attraction alongside a new nautical storyline. The venue will resemble a well-appointed ship parlor, which once belonged to a jovial sea captain and his strange, but captivating fiancée.

Build your own Paper Haunted Mansion Parlor, but know there is much more in store when the Disney Treasure sets sail!

MATERIALS



Glue



Scissors



Crayons

GUIDE

Lines

- Valley fold, fold in front
- - - - - Mountain fold, fold behind
- Cut
- X-ray or guide line.

INSTRUCTIONS

1. Color all the sheets however you'd like!
2. Sheet 1: Cut out the Floor Plan, taking note of which wall belongs on which side. Put the Side Rails aside.
3. Sheet 2: Cut and fold Entry Walls, Entry Ceiling, and Portal Frame. Fold and glue the Portal Frame where indicated. Align with the Floor Plan and glue the tabs underneath. Cut out and set aside all other pieces.
4. Sheet 3: Cut out Wall A and Portal Frame. Glue Portal Frame where indicated. Align Wall A with the Floor Plan and glue tab underneath. Cut out Wall D, the Mariner Painting, and the Bride Painting. Carefully cut out the rectangles that have an X shown. Align Wall D with the Floor Plan and glue tab underneath. Glue the corner tab to connect to Wall A. Fold the paintings like a Z, and glue the tabs indicated to the back of wall, aligning with the cut out rectangle.
5. Sheet 4: Cut out Wall B and Back Shelf. Glue Back Shelf where indicated. Fold and glue Porthole Drapes from Sheet 2 where indicated, in front of the portholes. Align Wall B with the Floor Plan and glue tab underneath. Use corner tab to glue Wall A to Wall B. Cut out Wall C, Fireplace, Ship Painting, Sea Captain Painting, and Portal Frame. Cut out the rectangles that have an X shown. Fold and glue the Fireplace and Portal Frame where indicated. Fold the paintings like a Z, and glue the tabs indicated to the back of wall, aligning with the cut out rectangle. Align Wall C with the Floor Plan and glue tab underneath. Use corner tabs to glue to Wall B and Wall D.
6. Fold and glue Side Rails from Sheet 1, align to the labeled areas on the Floor Plan, and glue to the adjacent walls.
7. Sheet 5: Cut out, fold, and glue all furniture pieces: Front Counter, Cabinet, Armchair, and Fishtank. Glue where indicated on the Floor Plan. Cut out and fold Ceiling Alcove and set aside.
8. Sheet 6: Cut out and fold Parlor Ceiling. Make sure to cut out the rectangle in the center. Take Ceiling Alcove, align over the rectangular hole, and glue tabs to the back of the Parlor Ceiling. Assemble Chandeliers from Sheet 7 and glue each to the center of the circles in the Ceiling Alcove. Fold and glue Columns 1-4 and glue one to each corner of the opening.
9. Sheet 7: Carefully cut out, fold, and glue the Wall B Silhouettes piece. Put this behind Wall B to create shadows when you put a light behind!

Please Note: When cutting with scissors and working with any of the materials listed above, adult participation and supervision is recommended.



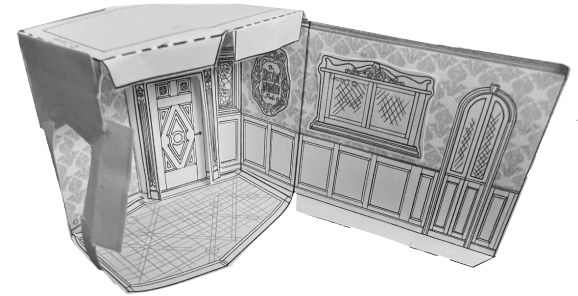
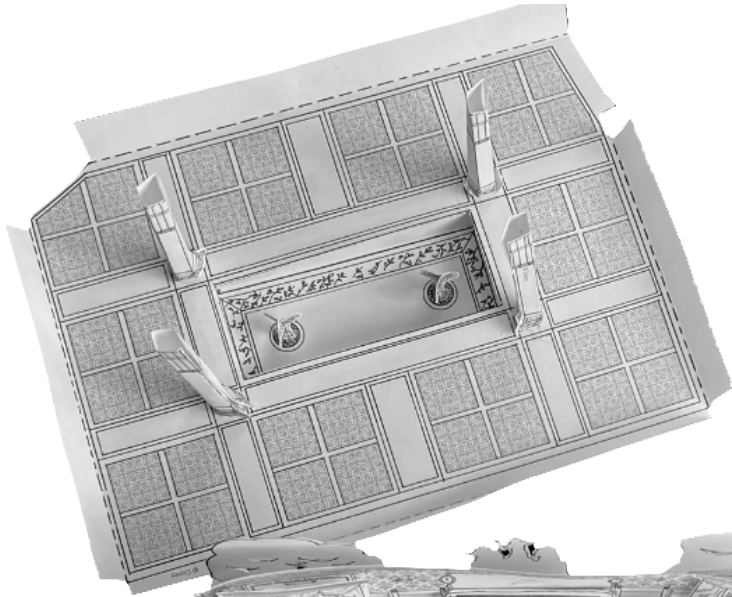
Disney Paper Parks

#DisneyMagicMoments | #DisneyPaperParks

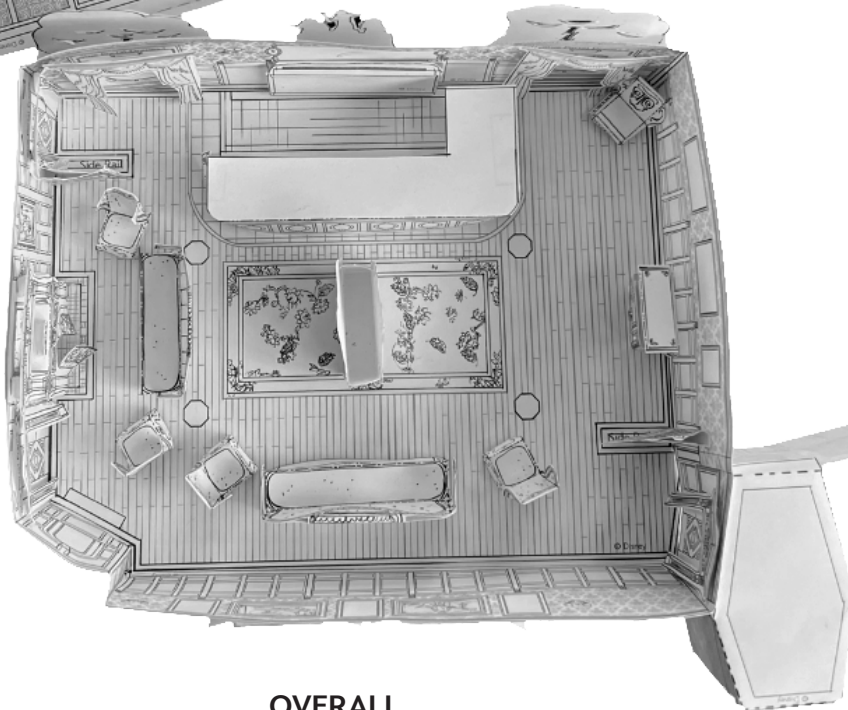
THE HAUNTED MANSION PARLOR

Sheet Numbers: 1, 2, 3, 4, 5, 6, 7

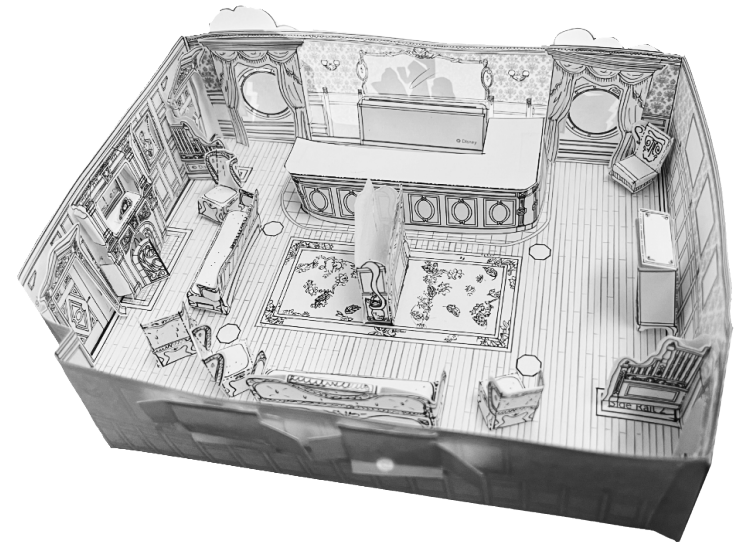
REFERENCE PHOTOS



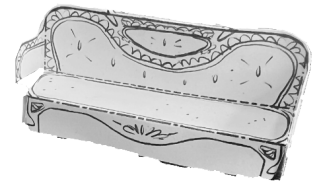
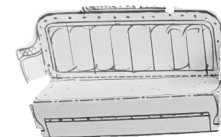
ENTRY



OVERALL



MAIN PARLOR AREA



FURNITURE



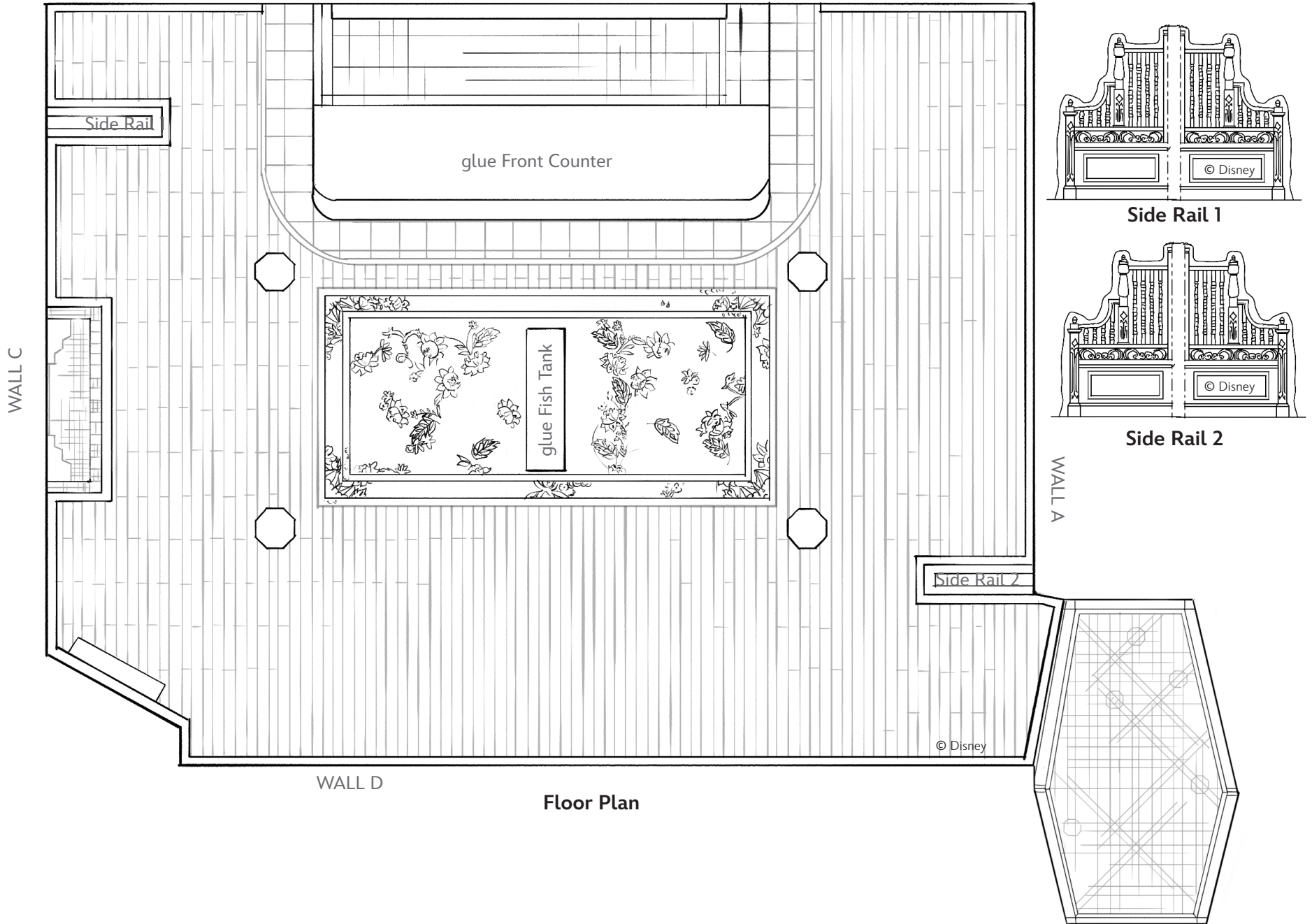
Disney Paper Parks

#DisneyMagicMoments | #DisneyPaperParks

THE HAUNTED MANSION PARLOR

Sheet Number: 1

WALL B



Floor Plan



Disney Paper Parks

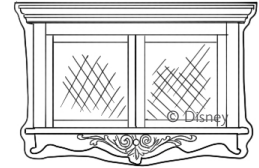
#DisneyMagicMoments | #DisneyPaperParks

THE HAUNTED MANSION PARLOR

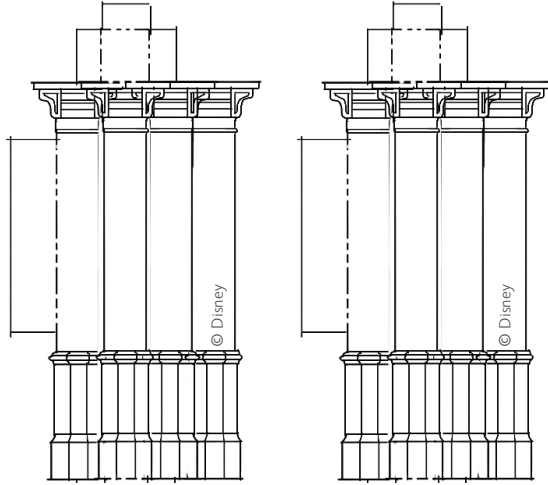
Sheet Number: 2



Marquee

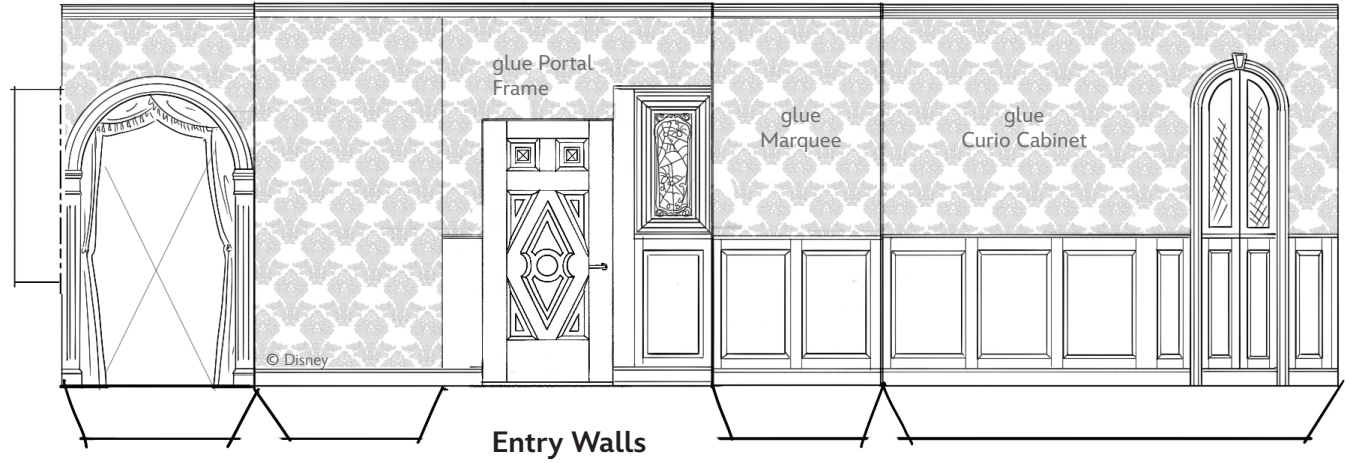


Curio Cabinet

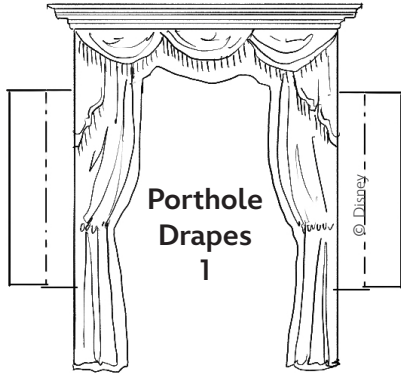


Column 1

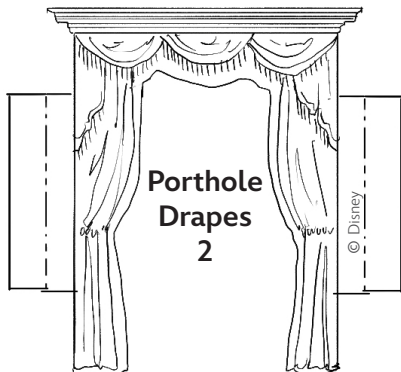
Column 2



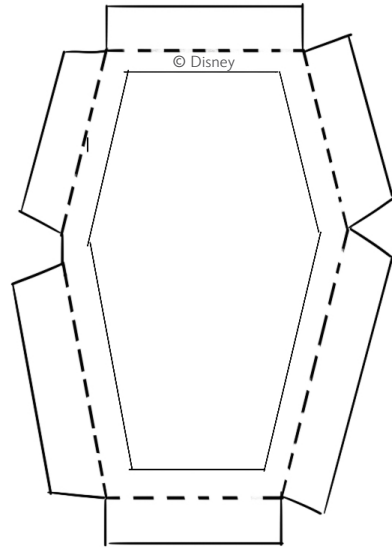
Entry Walls



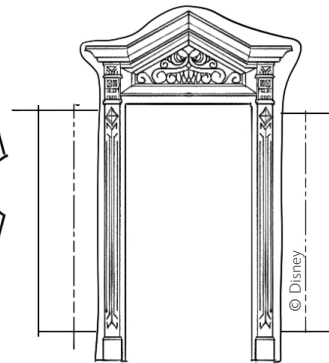
Porthole Drapes 1



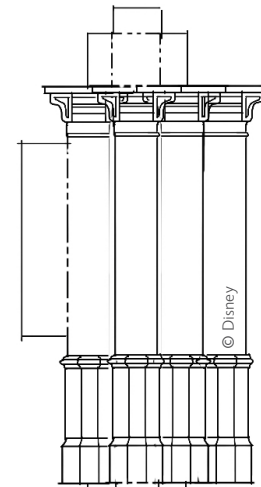
Porthole Drapes 2



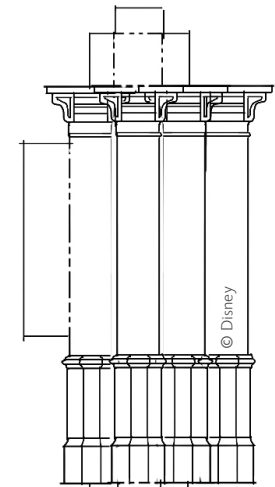
Entry Ceiling



Portal Frame



Column 3



Column 4

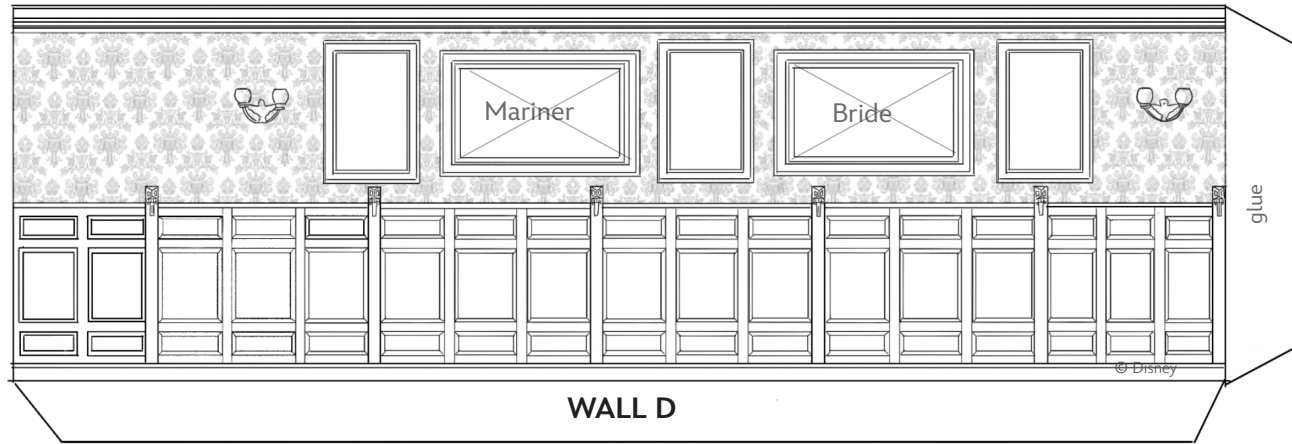


Disney Paper Parks

#DisneyMagicMoments | #DisneyPaperParks

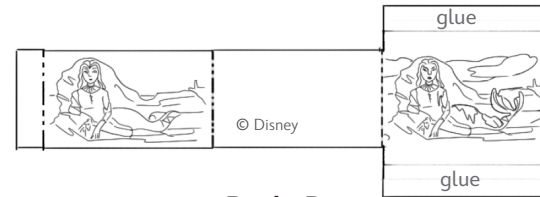
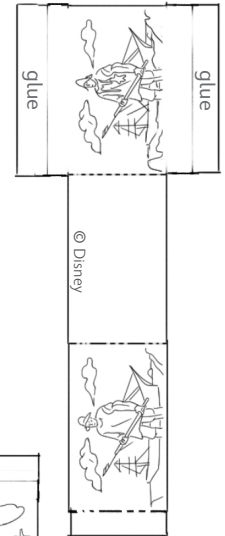
THE HAUNTED MANSION PARLOR

Sheet Number: 3

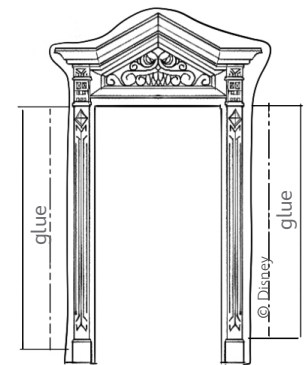
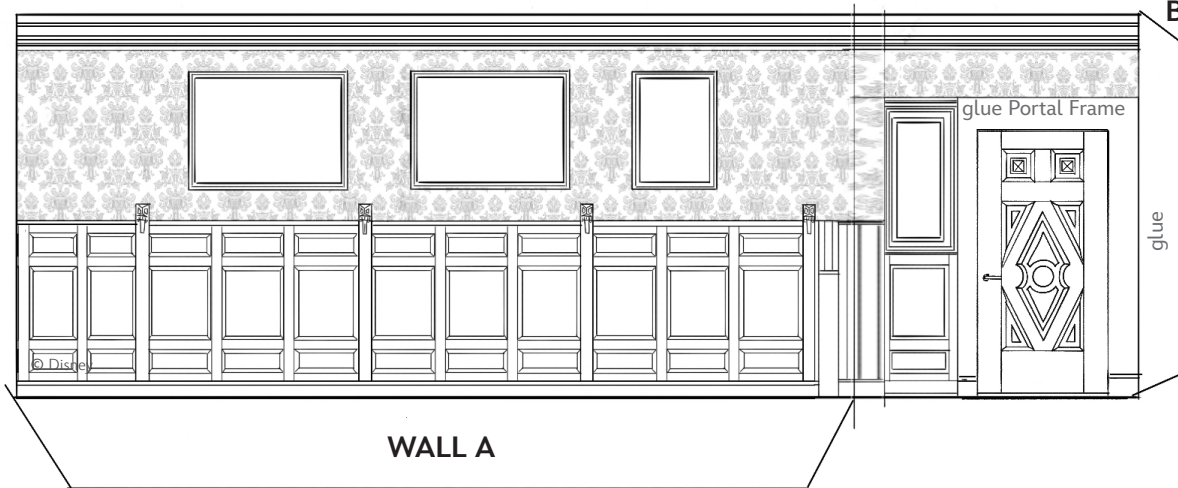


Tip: Do not glue the corners of Wall D if more visibility to the interior is desired. This wall can fold down.

Mariner Painting



Bride Painting



Portal Frame

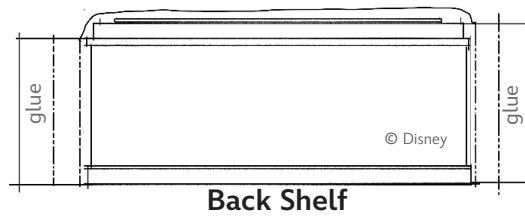
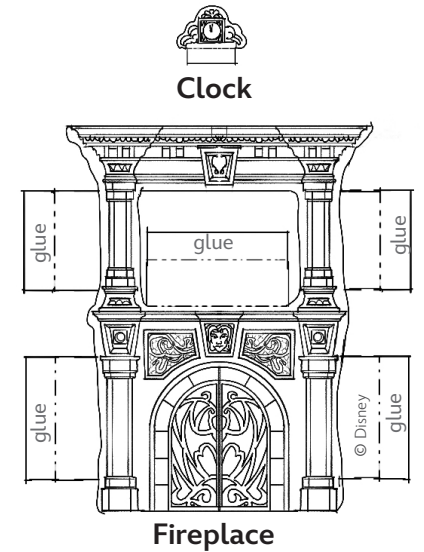
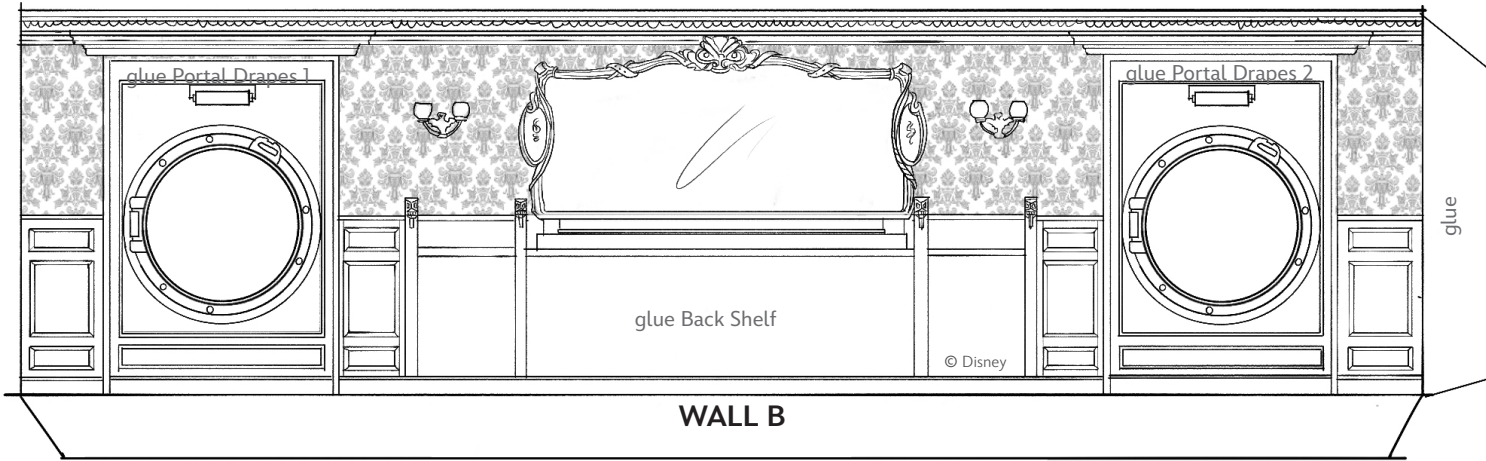


Disney Paper Parks

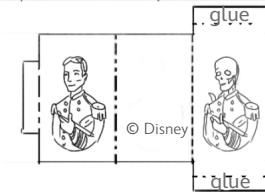
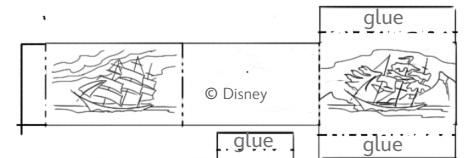
#DisneyMagicMoments | #DisneyPaperParks

THE HAUNTED MANSION PARLOR

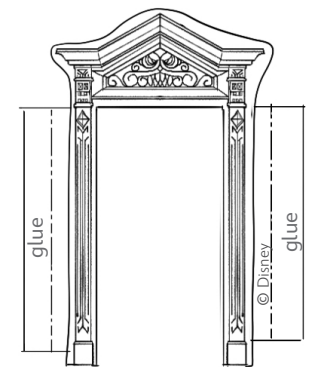
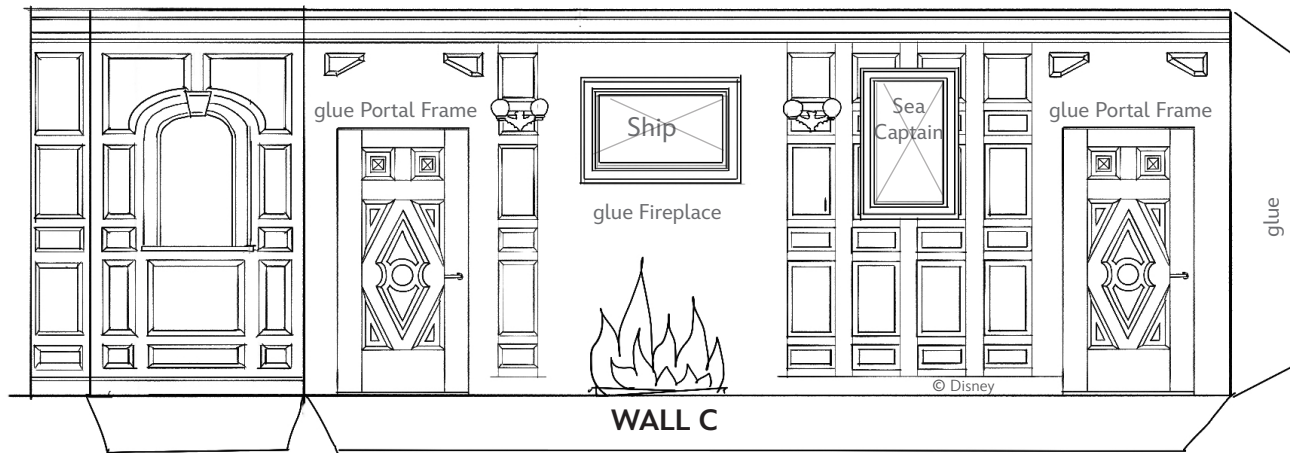
Sheet Number: 4



Ship Painting



Sea Captain Portrait



Portal Frame

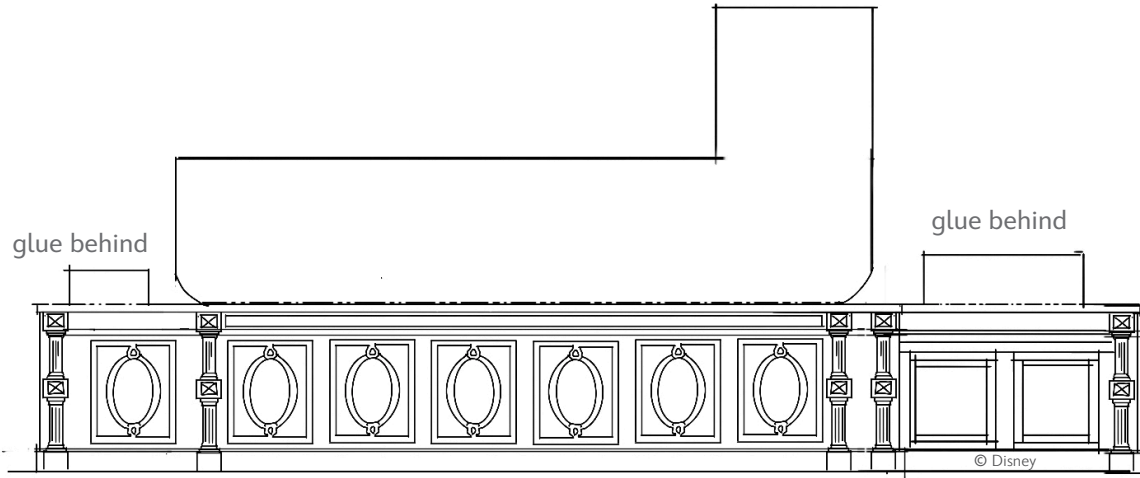


Disney Paper Parks

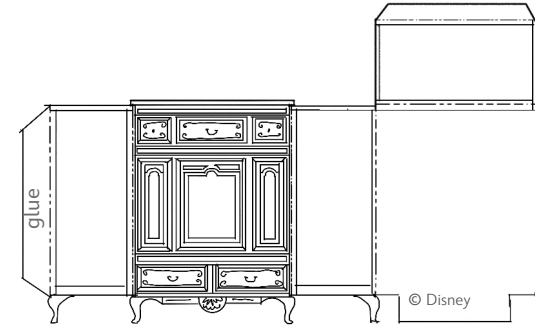
#DisneyMagicMoments | #DisneyPaperParks

THE HAUNTED MANSION PARLOR

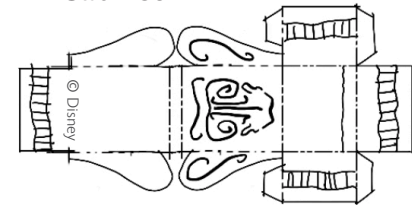
Sheet Number: 5



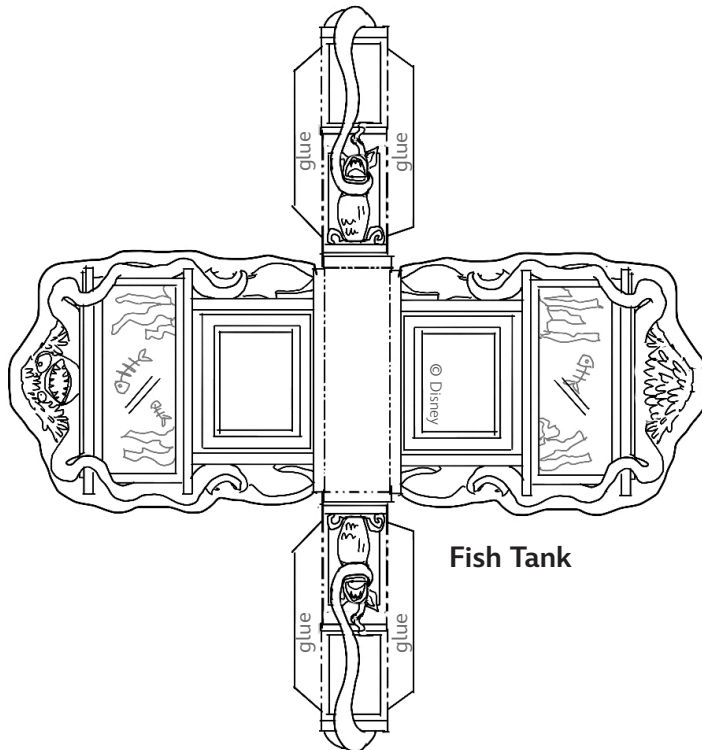
Front Counter



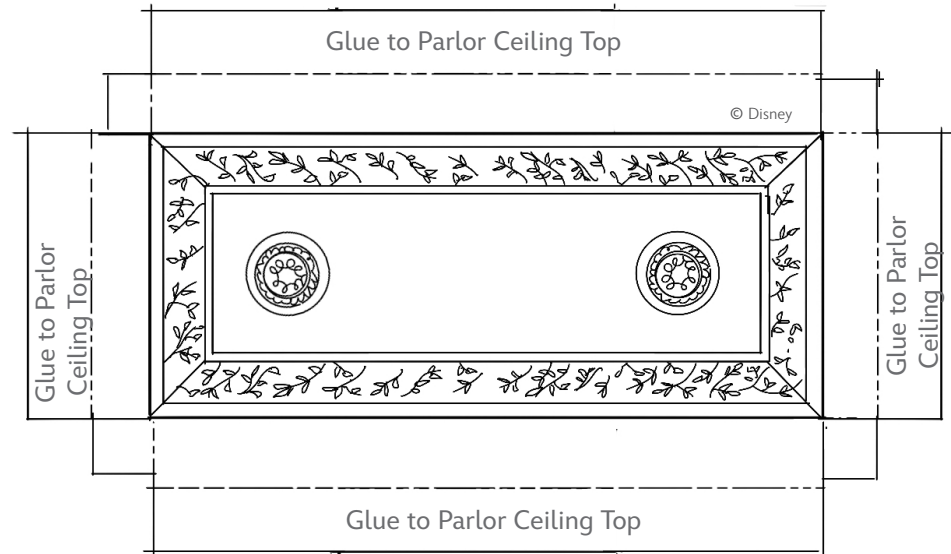
Cabinet



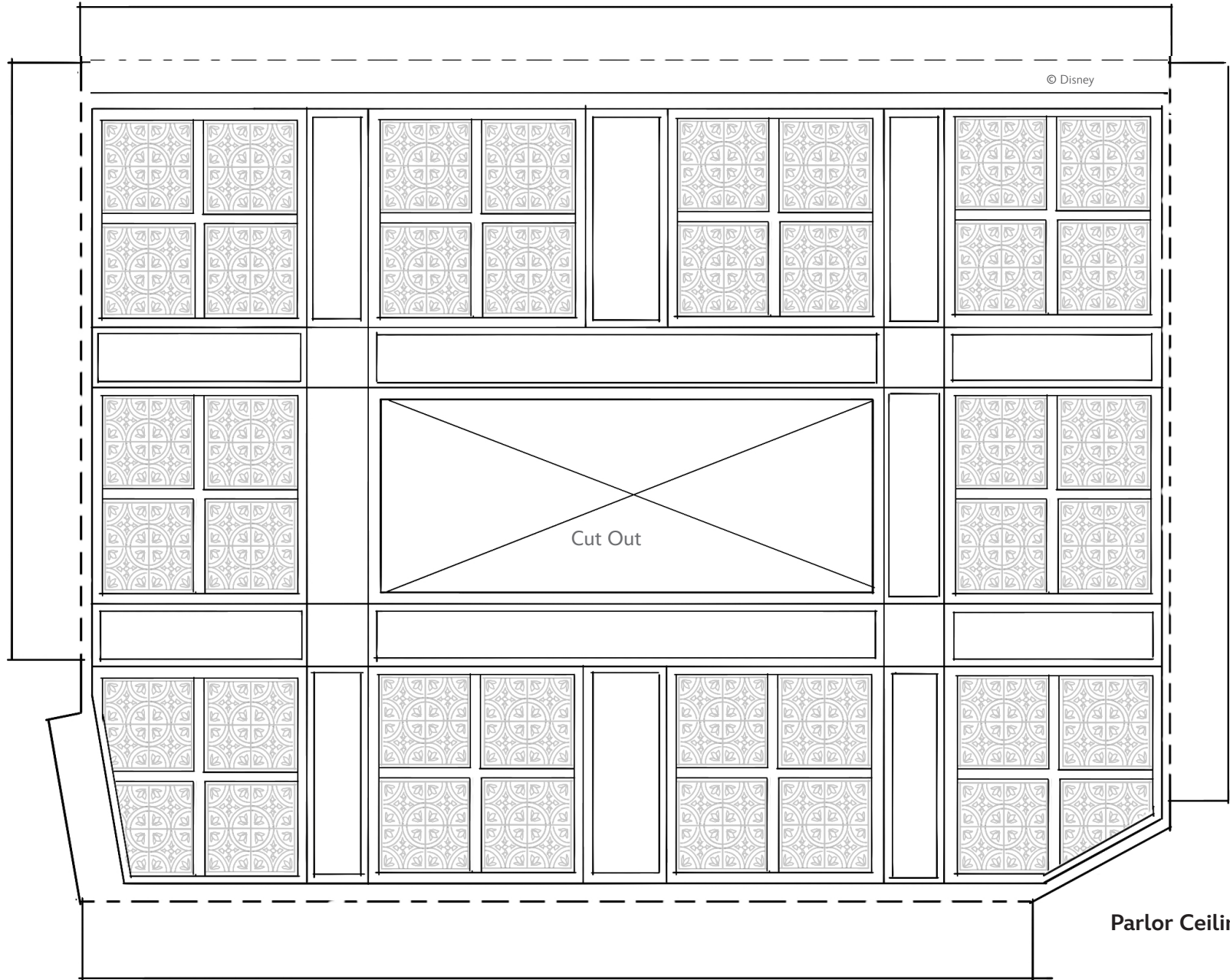
Armchair



Fish Tank



Ceiling Alcove



Tip: Cut the bottom third off the roof to make a peek-a-boo area to view the interior.

Parlor Ceiling

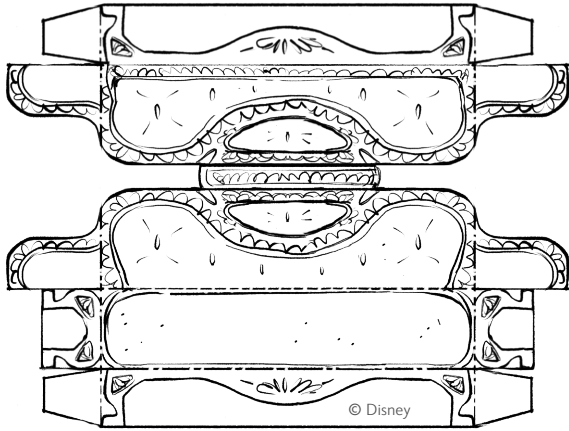


Disney Paper Parks

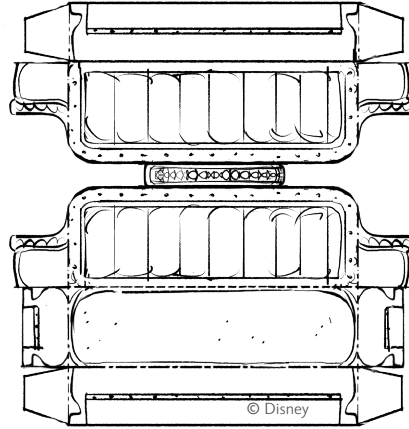
#DisneyMagicMoments | #DisneyPaperParks

THE HAUNTED MANSION PARLOR

Sheet Number: 7

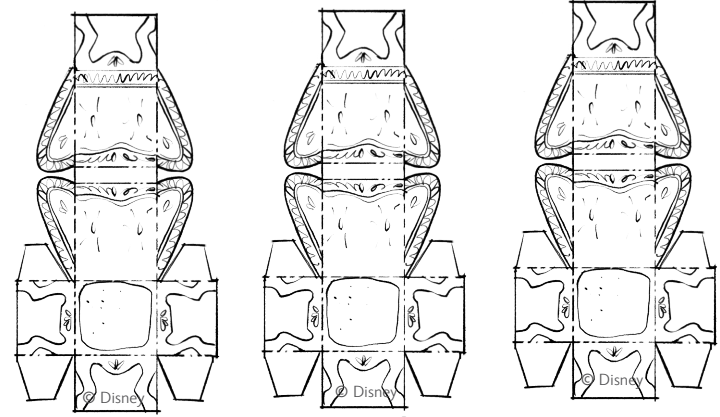


© Disney



© Disney

Sofas

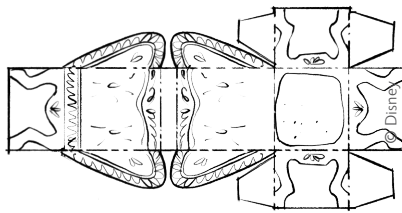


© Disney

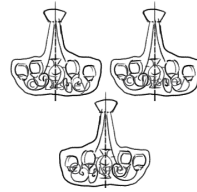
Armchairs

© Disney

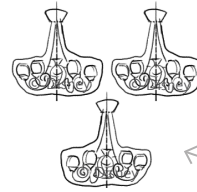
© Disney



© Disney



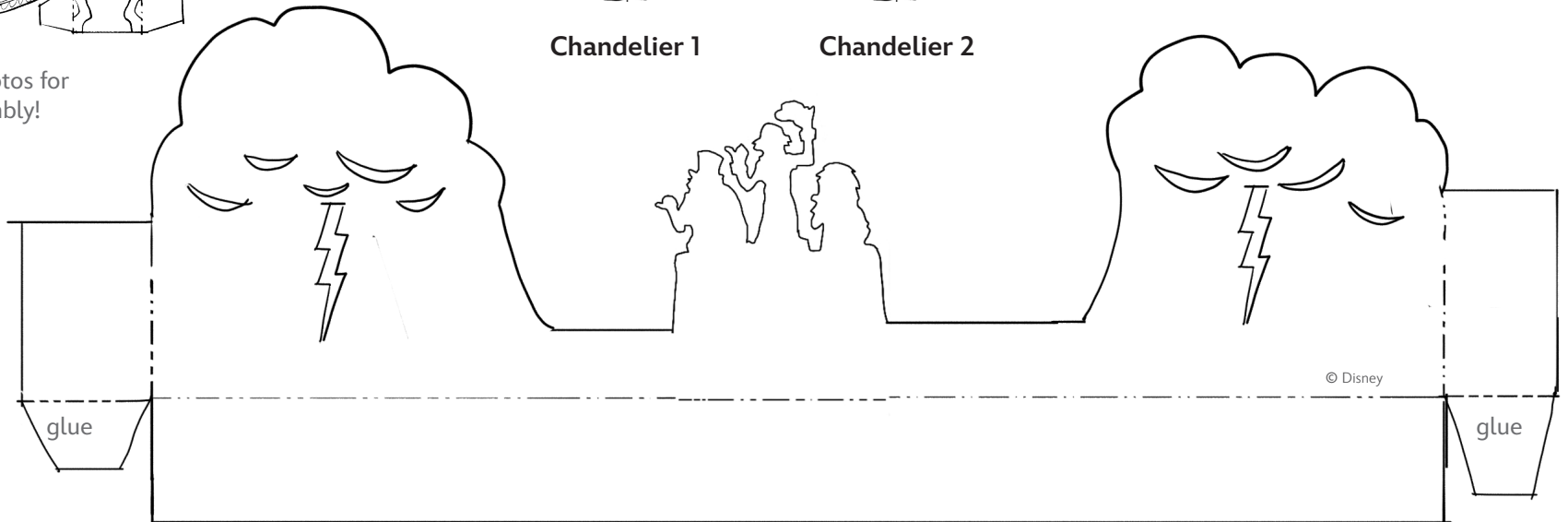
Chandelier 1



Chandelier 2

Fold each piece and glue each half to the back of the other half

See reference photos for furniture assembly!



© Disney

Wall B Silhouettes

Use a craft knife to carefully cut the thunderbolts and cloud outlines. Adult participation and supervision is recommended.